

READING YOUR METER

WHEN WATER FLOW REACHES THIS POINT, YOU GET BILLED.

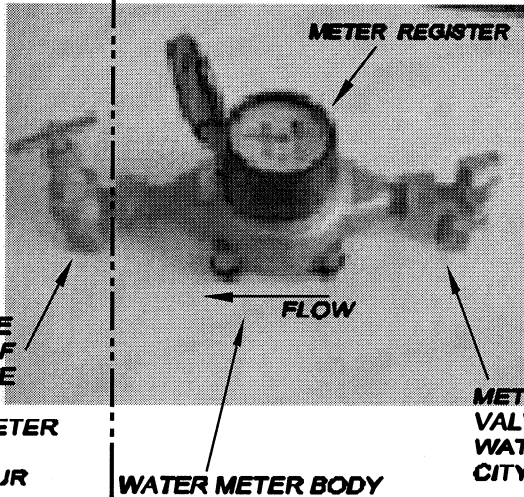
YOUR SIDE

LEAKS ON THIS SIDE ARE YOUR RESPONSIBILITY TO REPAIR AND WATER USE WILL BE BILLED.

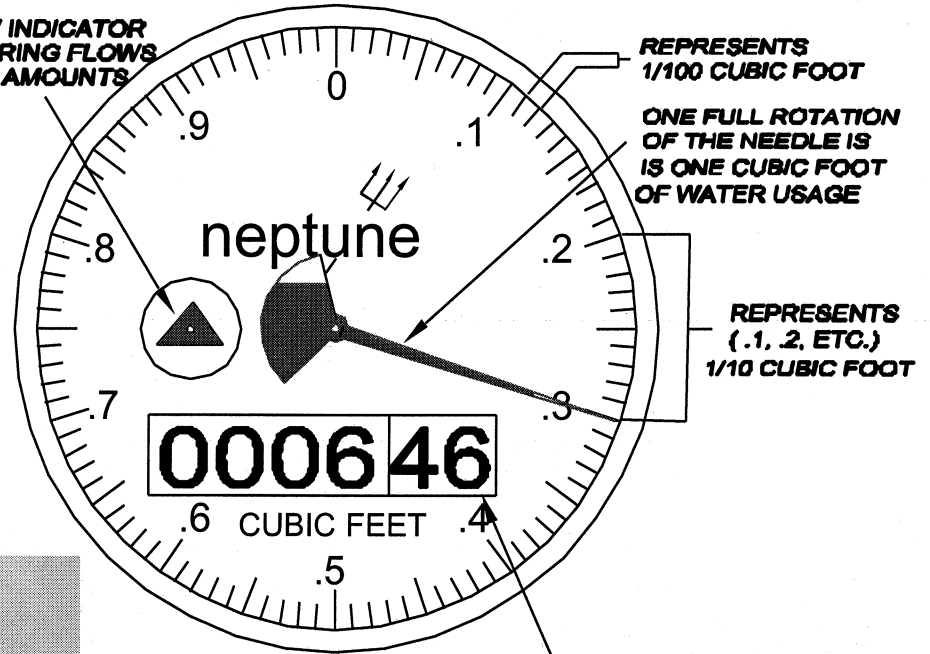
CUSTOMER VALVE FOR YOUR USE - IF YOU DO NOT HAVE THIS, THEN YOU LIKELY HAVE A METER COUPLER CONNECTING YOUR PLUMBING.

CITY SIDE

LEAKS ON THIS SIDE AND METER MALFUNCTION ARE THE RESPONSIBILITY OF THE CITY TO REPAIR AND WATER USE WILL NOT BE BILLED TO YOU.

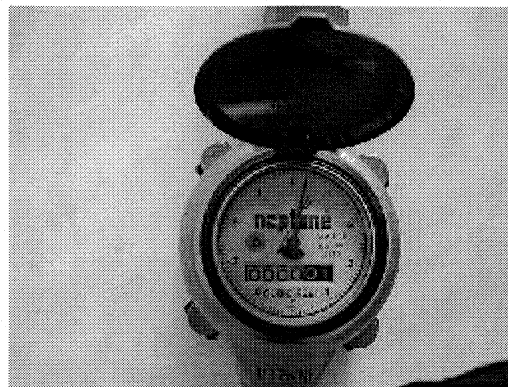


THIS DIAL REPRESENTS USAGE IN UNITS OF CUBIC FEET FOR BOTH 3/4" AND 5/8" RESIDENTIAL METERS.



TO TEST FOR LEAK:

1. TURN OFF ALL WATER INSIDE THE BUILDING AND ALL HOSE BIBS. NO WATER SHOULD BE RUNNING.
2. OPEN THE METER BOX AND READ THE LAST TWO DIGITS OF THE METER DIAL INCLUDING THE TENTHS AS SHOWN WITH THE NEEDLE. RECORD THIS READING.
3. WAIT 20-30 MINUTES, THEN RE-READ THE DIAL. IF IT HAS CHANGED FROM THE FIRST READING, THEN IT IS POSSIBLE THERE IS A LEAK IN THE WATER SYSTEM TO THE BUILDING.



TO DETERMINE CONSUMPTION: LIKE THE MILEAGE ODOMETER ON A VEHICLE, THIS DIAL TURNS ONE NUMBER FOR EVERY CUBIC FOOT USED. THEREFORE, THIS DIAL READS 646.3 CUBIC FEET. ONE CUBIC FOOT OF WATER EQUALS 7.48 GALLONS. MULTIPLY 646.3 CUBIC FEET TIMES 7.48. THIS EQUALS 4834.3 GALLONS OF WATER USAGE.