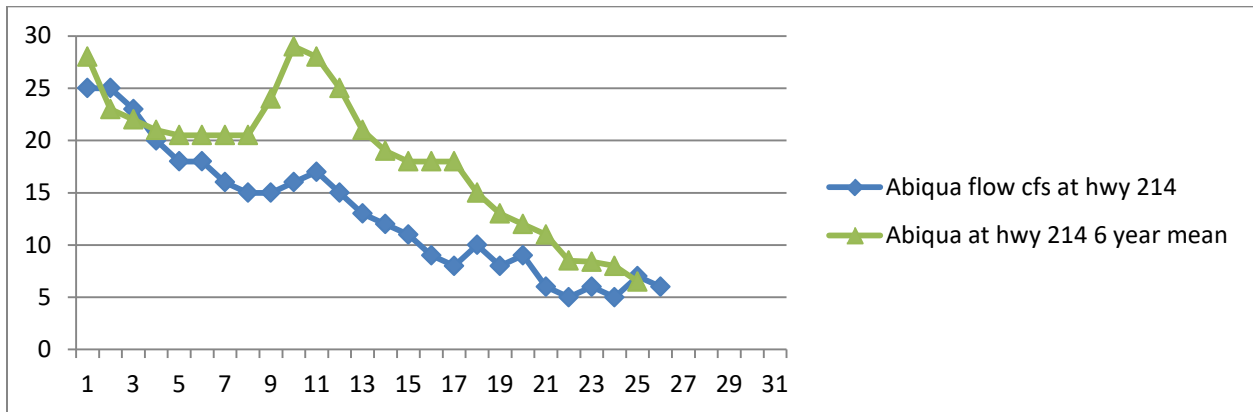


July 26th, 2021 Weekly water supply levels report.

Good day Mr. Mayor and Council members.

Abiqua Creek

This is the flow information from the USGS monitoring station for Abiqua Creek at Silverton. The blue line is the actual flow in cubic feet per second and the green line is the 6 year median flow for comparison. The minimum stream flow for Abiqua fish habitat is 2.7 cubic feet per second (cfs), at which point we would have to reduce our abstraction or stop our abstraction altogether to prevent an incidental “take” on an endangered species.

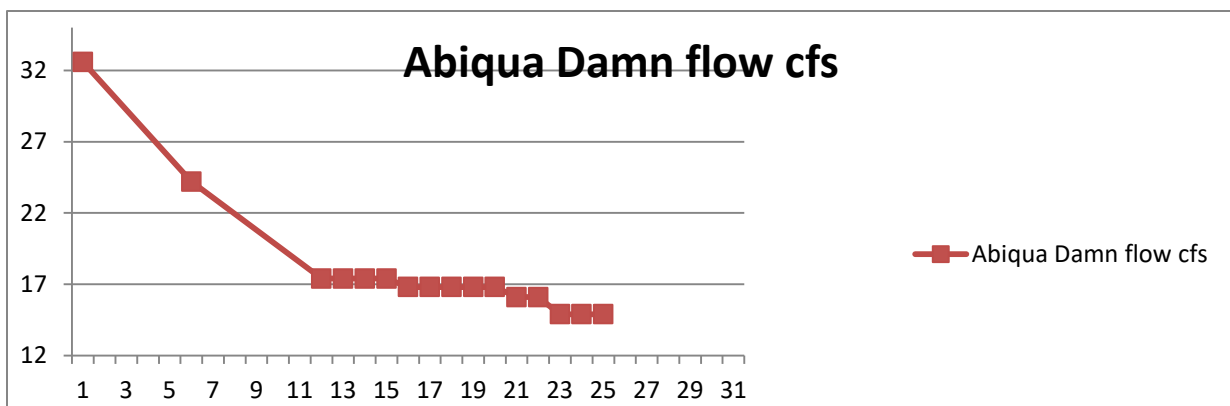


This information is available at: [USGS Abiqua Creek at Silverton Rd.](#)

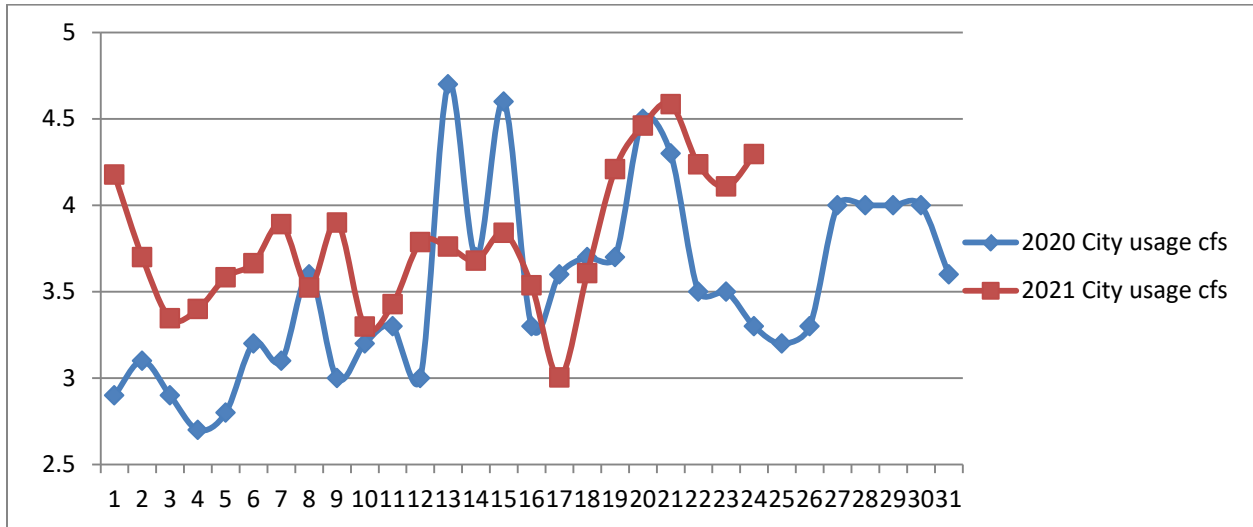
The graph is interactive and can be formatted to show information back to 2014.

We have a manually read staff gauge at the Abiqua Dam intake that we have recently begun reading daily. It appears that about 8 or 9 cfs is being used for irrigation between the dam and Hwy 214.

I have called the Water Master in charge of water rights on the Abiqua and Silver Creek. I hope to have a water rights report to you sometime this week.



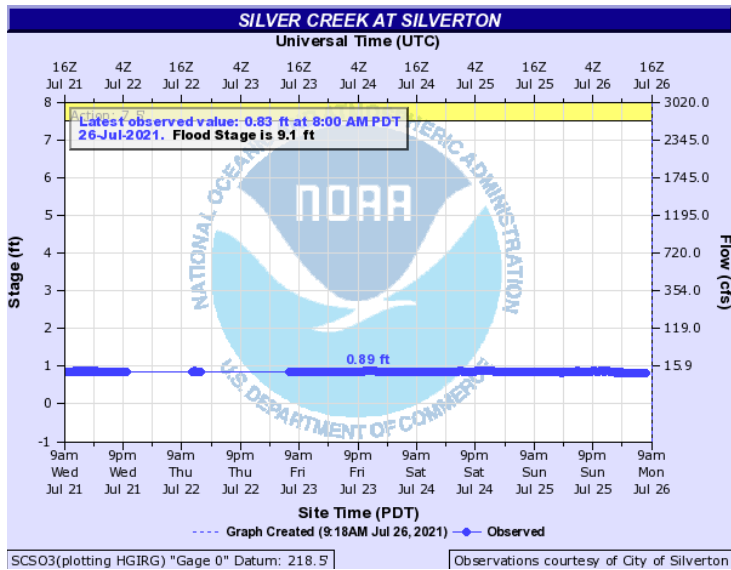
This next graph shows City of Silverton water usage.



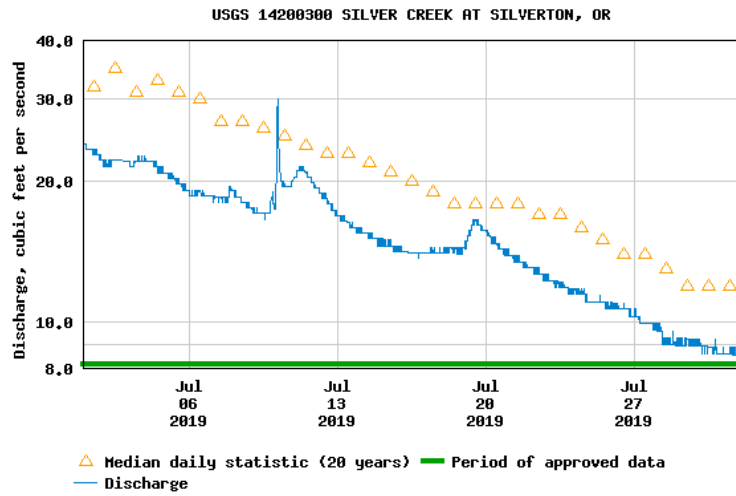
Silver Creek

The USGS stopped monitoring the gauge on Silver Creek in June of 2020. The city now monitors this gauge located just upstream of James Street. The National Weather Service has this information available online. Here is the latest graph. The thin line was a data interruption on July 21/22.

This graph is not interactive. We have not opened the reservoir and are not currently using Silver Creek as a water source for drinking water. Current flows are at 15.7 cfs. As shown below the 6 year median is around 16 cfs. The minimum flow for Silver Creek fish habitat is 2.6 cfs, at which point we would need to begin releasing water from the Silverton Reservoir.



The graph below is USGS historical data from 2019 during the month of July.



You can find the National Weather Service graph at: [NWS Silver Creek Flow](#)

You can find the historical data at: [USGS Silver Creek Historical Data](#)